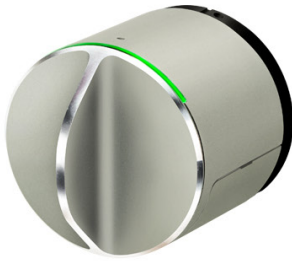




Danaanywhere

To give full advantage of the Danalock features we have developed the Danaanywhere concept. It is based on state of the art technologies, which mainly is centred on communication on the standard HTTP protocol. This gives the Danaanywhere full integration possibilities to any system.



This means you can:

- Integrate the lock/unlock command in your own application.
- Get the log info from your interface.
- Control access levels.
- Automatically send e-keys to a user from a 3rd party administration system.
- And much more.

Further we've made it possible to use the single sign on concept. It makes it possible for you to use the existing credentials from users in your current application or even the standard Open Authentication (OAuth) if appropriated.

This means that if you are already using an existing user interface for your customers, making it possible to work seamlessly with the Danalock features from your existing application.

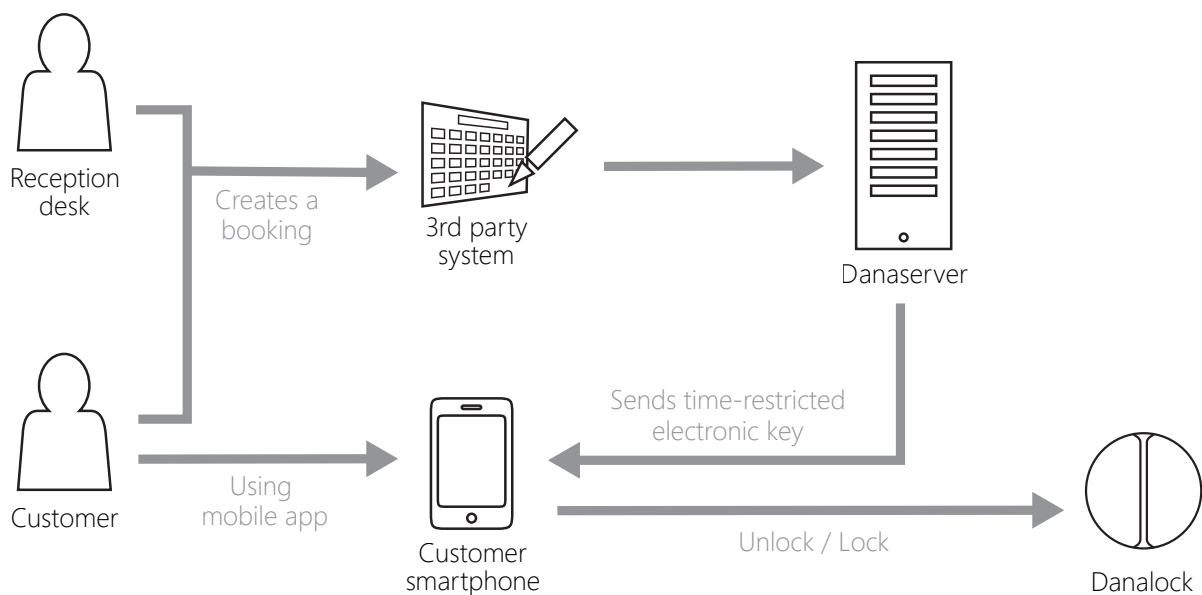


Danaanywhere

3rd party administration system integration

Our Danaanywhere concept allows integration with your administration system by the use of state of the art technologies. The integration supports integration with your system by sending messages via the HTTP protocol on a secure channel.

The integration allows a mapping between the addresses and the associated locks along with an electronic sharing of keys on a user level where the electronic keys can be either permanently or temporary on a day to day basis.



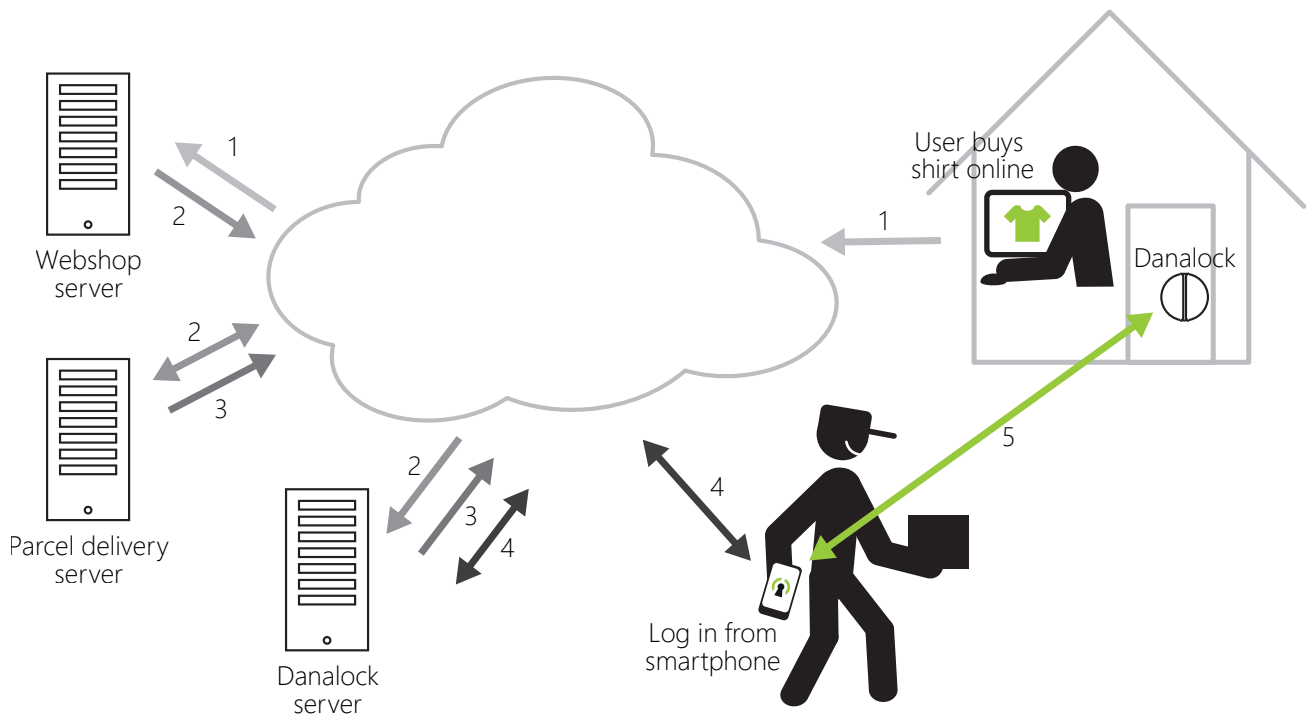


Danaanywhere

Example:

Receiving parcels:

A user is buying a shirt from a webshop. The user has a Danalock installed on the front door. The user has chosen to be part of the "secure delivery" program, meaning he has allowed 3rd party service providers access to his Danalock, which enables them to give better service – like in house delivery.



When the order is executed in the webshop a message is send to the Danalock server using the Danaanywhere interface (1). Further a booking of the parcel pickup is done just like today (2).

Every day after route planning is done and prior to every postman starts their route, the parcel delivery company automatically sends a request to the Danalock server to get the keys for the Danalocks installed on the specific routes (3). This means that now the virtual keys for each specific route are stored under the specific postmans profile.

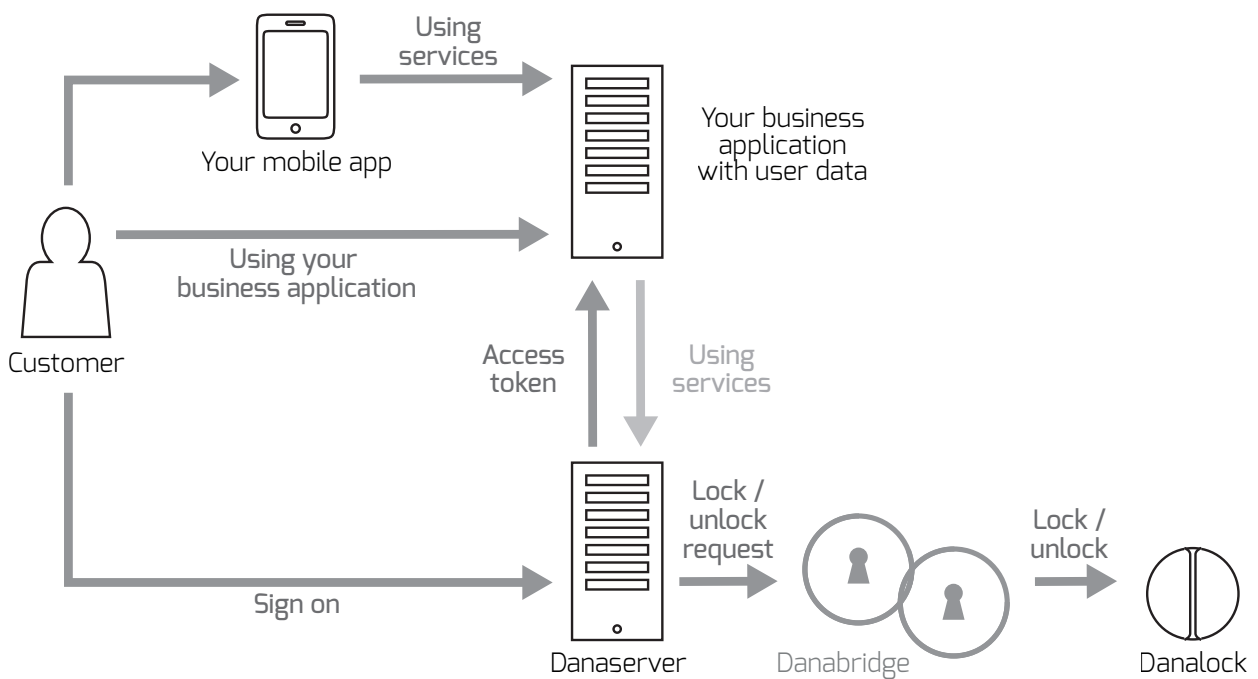
The postman can now either log in to the parcel delivery companys app to get the keys and lock and unlock the doors on the route for delivery, or he can collect the keys to keyfob (4), and do all openings with this. (5) Fast, easy and secure.



Danaanywhere

Open Authentication

Our Danaanywhere concept allows integration with your business applications by the use of state of the art technologies. The integration supports a seamless integration with your business applications with the use of the principals from single sign-on with open authentication (OAuth). This means that you will be able to integrate your business applications without saving credentials of the Danalock users and even control the actions on their behalf as soon as they have been authorized.



The customer is logs in to Danaanywhere, which supplies your system with a user-dependent access token. The access token can be used to access the ressource pool within the Danalock domain. In other words, the access token allows you to latch and unlatch the lock when you are next to the lock and remotely.

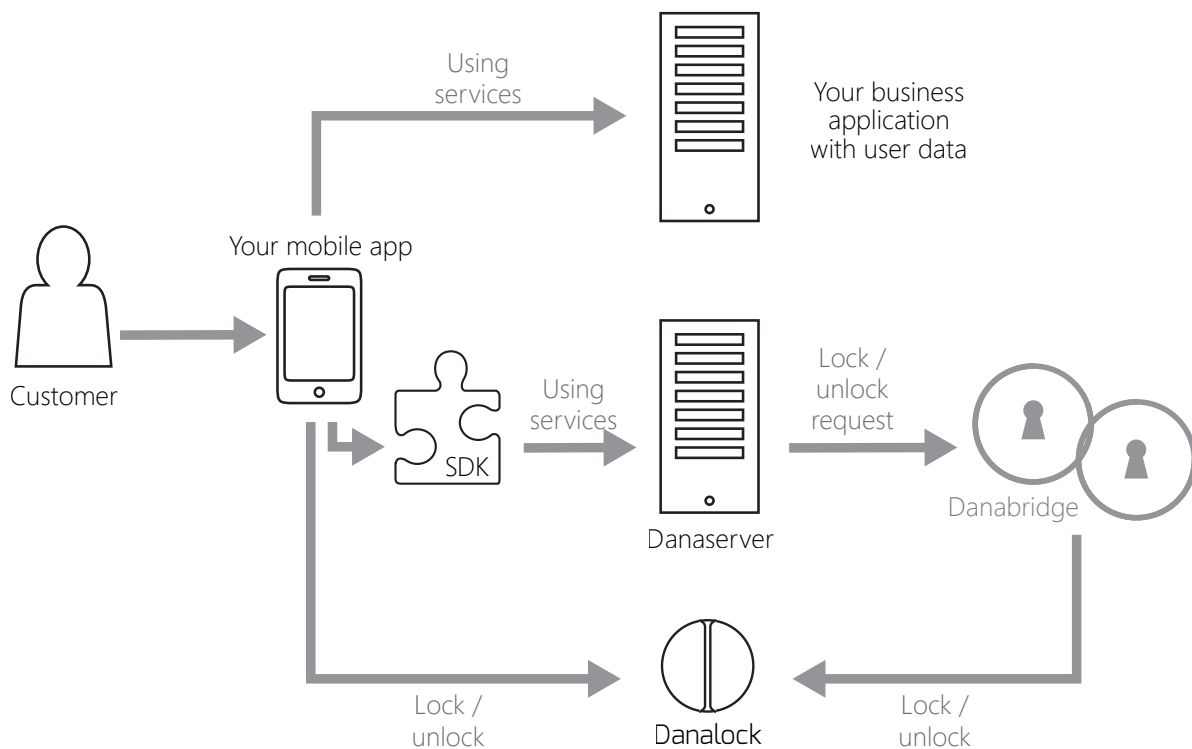
Your application allows you to administrate who has access to the lock by sending invitations and removing users from the access list of the lock. All from .



Danaanywhere

Software Development Kit

Our Danaanywhere concept allows complete integration with your existing mobile app. This is done with the use of a Software Development Kit (SDK) based on the state of the art technologies, which makes it possible to use all the provided functionality in your mobile app. This complete interaction into the already known user interface makes it easier for the customers to use the new features in your mobile app.



The SDK allows you to latch and unlatch the lock when you are next to the lock and remotely. You are also able to administrate who has access to the lock by sending invitations and removing users from the access list of the lock.

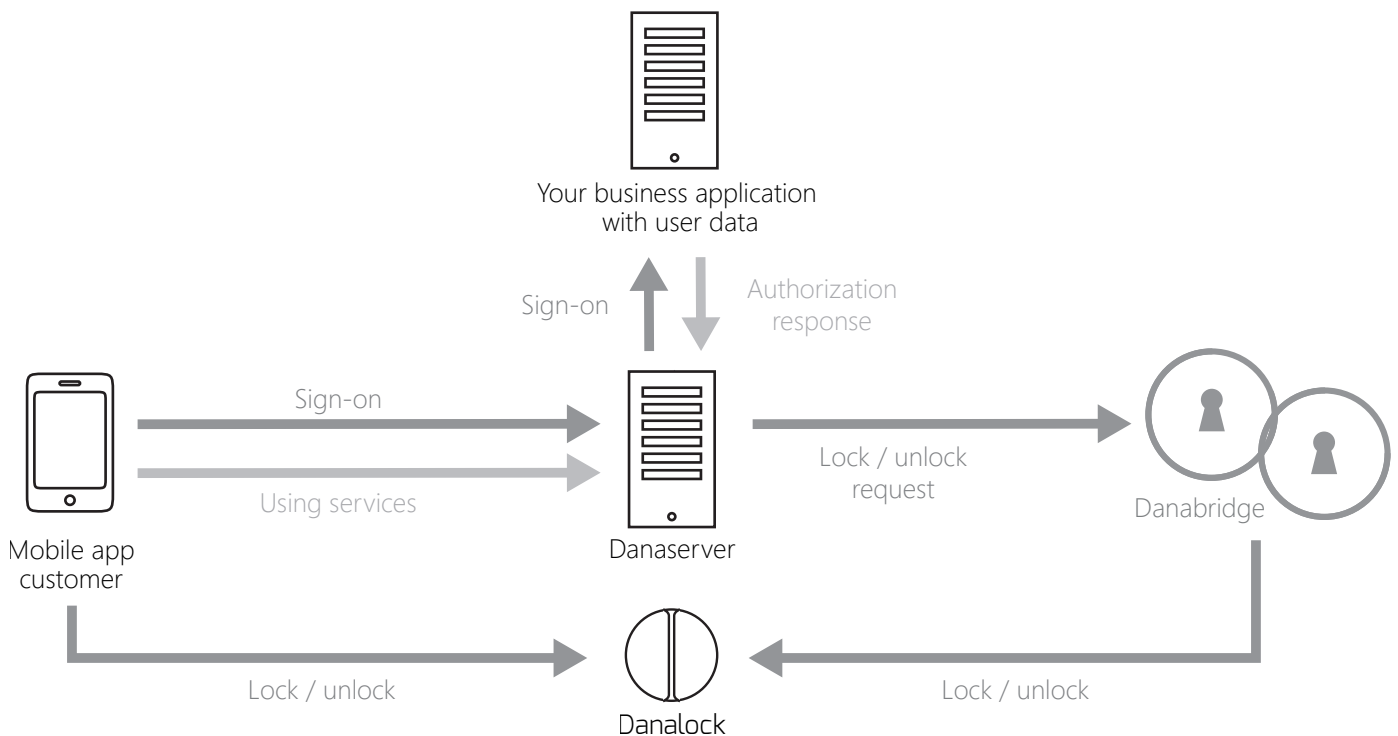


Danaanywhere

Single Sign-on

Our Danaanywhere concept allows integration with your business applications with the use of the single sign-on principles. The integration provides a parallel authentication with your business applications via the HTTP protocol on a secure channel.

This means that your customers only have to type in one set of credentials when using your business applications together with the services provided by the Danaanywhere concept.



The customer is logs in to Danaanywhere that forwards the sign-on request to your business application. Based on a successful authentication a roaming user profile is created within the Danaanywhere domain without storing the secrets such as a password, which belong to the user. The roaming user profile is used to manage the user-dependent services in the Danaanywhere domain such as latch and unlatch of the lock when you are next to the lock and remotely.

Other features such as administrating who can access the lock by sending invitations and removing users from the access list of the lock are also available.